



## **Become ventilation leader with VENTS!**

- complete range of ventilation equipment for residential and industrial application
- high quality of the products confirmed by European certificates
- meet the latest customer's and consumer's demands on ventilation market
- continuous products range expansion
- energy saving products
- environmentally friendly technologies
- quality management system ISO 9001:2000
- products are certified by TUV (Germany) and UL (USA)
- products comply with CE regulations
- distribution network in more than 90 countries
- 60 000 sq.meters of production facilities
- 16 workshops for metal and plastic processing
- 2000 qualified specialists
- 10 years warranty against penetration corrosion
- 5 years warranty for residential ventilation
- 2 years warranty for commercial and industrial ventilation

## INLINE CENTRIFUGAL FAN (ROUND DUCTS)

### VENTS VK

W: 61-310  
dB(A): 36-53



VK 100 Q	205 m³/h
VK 100	250 m³/h
VK 125 Q	260 m³/h
VK 125	355 m³/h
VK 150	460 m³/h
VK 200	780 m³/h
VKS 200	930 m³/h
VK 250 Q	865 m³/h
VK 250	1080 m³/h
VK 315	1340 m³/h
VKS 315	1700 m³/h

### VENTS VKM

W: 60-665  
dB(A): 36-65



VKM 100 Q	210 m³/h
VKM 100	270 m³/h
VKM 125 Q	255 m³/h
VKM 125	355 m³/h
VKM 150 Q	470 m³/h
VKM 150	555 m³/h
VKMS 150	645 m³/h
VKM 160 Q	470 m³/h
VKM 160	555 m³/h
VKMS 160	645 m³/h
VKM 200	950 m³/h
VKMS 200	1100 m³/h
VKM 250 Q	1190 m³/h
VKM 250	1310 m³/h
VKM 315	1400 m³/h
VKMS 315	1880 m³/h
VKM 355 Q	2210 m³/h
VKM 400	3050 m³/h
VKM 450	5260 m³/h

### VENTS VKM E

W: 27  
dB(A): 32



VKM 100 E	180 m³/h
VKM 125 E	240 m³/h

### VENTS VKM EC

W: 80-160  
dB(A): 45-50



VKM 160 EC	660 m³/h
VKM 200 EC	840 m³/h
VKM 250 EC	1275 m³/h
VKM 315 EC	1460 m³/h

### VENTS VKMz

W: 60-185  
dB(A): 35-53



VKMz 100	250 m³/h
VKMz 100 Q	195 m³/h
VKMz 125	330 m³/h
VKMz 125 Q	230 m³/h
VKMz 150	455 m³/h
VKMz 160	455 m³/h
VKMz 200	1000 m³/h
VKMz 250	1070 m³/h
VKMz 315	1540 m³/h

## INLINE MIXED FLOW FANS

### VENTS TT

W: 21-314  
dB(A): 27-48



TT 100	145-187 m³/h
TT 125	220-280 m³/h
TT 125 S	240-320 m³/h
TT 150	405-520 m³/h
TT 160	405-520 m³/h
TT 250	950 m³/h
TT 315	1850 m³/h

### VENTS TT PRO

W: 23-330  
dB(A): 27-58



TT PRO 100	180-245 m³/h
TT PRO 125	240-350 m³/h
TT PRO 150	415-565 m³/h
TT PRO 160	415-565 m³/h
TT PRO 200	830-1040 m³/h
TT PRO 250	1110-1400 m³/h
TT PRO 315	1570-2050 m³/h

## INLINE CENTRIFUGAL FAN (RECTANGULAR DUCTS)

### VENTS VKPF

W: 295-5850  
dB(A): 50-67



VKPF / VKPFI 4E 400x200	1440 m³/h
VKPF / VKPFI 4D 400x200	1470 m³/h
VKPF / VKPFI 4E 500x250	1750 m³/h
VKPF / VKPFI 4D 500x250	1850 m³/h
VKPF / VKPFI 4E 500x300	2350 m³/h
VKPF / VKPFI 4D 500x300	2350 m³/h
VKPF / VKPFI 4E 600x300	2950 m³/h
VKPF / VKPFI 4D 600x300	3740 m³/h
VKPF / VKPFI 4E 600x350	4260 m³/h
VKPF / VKPFI 4D 600x350	5020 m³/h
VKPF / VKPFI 4D 700x400	6450 m³/h
VKPF / VKPFI 6D 800x500	7610 m³/h
VKPF / VKPFI 4D 800x500	8120 m³/h
VKPF / VKPFI 6D 900x500	9540 m³/h
VKPF / VKPFI 6D 1000x500	9540 m³/h

### VENTS VKPFI

W: 295-5850  
dB(A): 42-61



### VENTS VKP

W: 138-3800  
dB(A): 53-67



VKP / VKPI 2E 400x200	930 m³/h
VKP / VKPI 2E 500x250	1720 m³/h
VKP / VKPI 4E 500x300	1700 m³/h
VKP / VKPI 4D 500x300	1380 m³/h
VKP / VKPI 4E 600x300	2470 m³/h
VKP / VKPI 4D 600x300	2530 m³/h
VKP / VKPI 4E 600x350	2950 m³/h
VKP / VKPI 4D 600x350	2970 m³/h
VKP / VKPI 4D 1000x500	15000 m³/h

### VENTS VKPI

W: 138-510  
dB(A): 51-46



### VENTS VKP EC

### VENTS VKPI EC

W: 480-2980  
dB(A): 58-69



VKP / VKPI 600x300 EC	3350 m³/h
VKP / VKPI 600x350 EC	4550 m³/h
VKP / VKPI 700x400 EC	6300 m³/h
VKP / VKPI 800x500 EC	8900 m³/h
VKP / VKPI 900x500 EC	10850 m³/h
VKP / VKPI 1000x500 EC	10850 m³/h

## SOUND-INSULATED CENTRIFUGAL FANS

### VENTS TT Silent-M

W: 24-313  
dB(A): 24-40



TT Silent-M 100	min 170 m³/h max 240 m³/h
TT Silent-M 125	min 230 m³/h max 340 m³/h
TT Silent-M 150	min 405 m³/h max 555 m³/h
TT Silent-M 160	min 405 m³/h max 555 m³/h
TT Silent-M 200	min 810 m³/h max 1020 m³/h
TT Silent-M 250	min 1050 m³/h max 1330 m³/h
TT Silent-M 315	min 1530 m³/h max 1950 m³/h

### VENTS VKMI

W: 60-296  
dB(A): 30-48



VKMI 250 Q	1190 m³/h
VKMI 250	1310 m³/h
VKMI 315	1400 m³/h
VKMI 315 S	1880 m³/h

VKMI 100 Q	210 m³/h
VKMI 100	270 m³/h
VKMI 125 Q	255 m³/h
VKMI 125	355 m³/h
VKMI 150 Q	470 m³/h
VKMI 150	555 m³/h
VKMI 150 S	645 m³/h
VKMI 160 Q	470 m³/h
VKMI 160	555 m³/h
VKMI 160 S	645 m³/h
VKMI 200	950 m³/h
VKMI 200 S	1100 m³/h

### VENTS VS

W: 230-4250  
dB(A): 51-69



VS 630-6D	12030/10440 m³/h
VS 710-6D	15830/14880 m³/h

VS 355-4E	2890/2650 m³/h
VS 355-4D	2660/2380 m³/h
VS 400-4E	3750/3535 m³/h
VS 400-4D	3950/3110 m³/h
VS 450-4E	5630/4930 m³/h
VS 450-4D	5700/5080 m³/h
VS 500-4E	7330/6680 m³/h
VS 500-4D	7940/7200 m³/h
VS 560-4D	11340/10490 m³/h
VS 560-6D	7970/7330 m³/h
VS 630-4D	15170/13740 m³/h
VS 630C-4D	16870/14930 m³/h

### VENTS KSA

W: 110-570  
dB(A): 29,1-43,7



KSA 100-2E	400 m³/h
KSA 125-2E	530 m³/h
KSA 150-2E	730 m³/h
KSA 160-2E	730 m³/h
KSA 200-4E	850 m³/h
KSA 250-4E	1500 m³/h
KSA 315-4E	2140 m³/h

### VENTS KSB

W: 72-322  
dB(A): 33-43



KSB 100	240 m³/h
KSB 125	330 m³/h
KSB 150	420 m³/h
KSB 160	420 m³/h
KSB 200	730 m³/h
KSB 200 S	950 m³/h
KSB 250	1300 m³/h
KSB 315	2150 m³/h

## SOUND-INSULATED CENTRIFUGAL FANS

### VENTS KSD

W: 120-1066  
dB(A): 40-47



KSD 250-6E	1210 m³/h
KSD 250 S-6E	1680 m³/h
KSD 250-4E	1520 m³/h
KSD 250 S-4E	2470 m³/h
KSD 315-6E	2460 m³/h
KSD 315 S-6E	3470 m³/h
KSD 315-4E	3200 m³/h
KSD 315 S-4E	3520 m³/h
KSD 315/250x2-6E	2610 m³/h
KSD 315/250x2 S-6E	3850 m³/h
KSD 315/250x2-4E	3420 m³/h
KSD 315/250x2 S-4E	3930 m³/h

### VENTS KSK

W: 180-1500  
dB(A): 41-51



KSK 150 4E	700 m³/h
KSK 160 4E	700 m³/h
KSK 150 4D	730 m³/h
KSK 160 4D	730 m³/h
KSK 200 4E	1600 m³/h
KSK 200 4D	1650 m³/h
KSK 250 4E	3400 m³/h
KSK 250 4D	3500 m³/h

## DIRECT EXHAUST AXIAL FANS

### VENTS OV

W: 50-750  
dB(A): 50-75



OV / OVK / VKF 2E 200	860 m³/h
OV / OVK / VKF 2E 250	1050 m³/h
OV / OVK / VKF 2D 250	1060 m³/h
OV / OVK / VKF 4E 250	800 m³/h
OV / OVK / VKF 4D 250	850 m³/h
OV / OVK / VKF 2E 300	2230 m³/h
OV / OVK / VKF 2D 300	2310 m³/h
OV / OVK / VKF 4E 300	1340 m³/h
OV / OVK / VKF 4D 300	1310 m³/h
OV / OVK / VKF 4E 350	2500 m³/h
OV / OVK / VKF 4D 350	2520 m³/h
OV / OVK / VKF 4E 400	3580 m³/h
OV / OVK / VKF 4D 400	3740 m³/h
OV / OVK / VKF 4E 450	4680 m³/h
OV / OVK / VKF 4D 450	5280 m³/h
OV / OVK / VKF 4E 500	7060 m³/h
OV / OVK / VKF 4E 550	8800 m³/h
OV / OVK 4D 500	6570 m³/h
OV / OVK 4D 550	9700 m³/h
OV / OVK / VKF 4E 630	11900 m³/h
OV / OVK 4D 630	12200 m³/h
OV 6E 630	10900 m³/h

### VENTS OVK

W: 50-750  
dB(A): 50-75



### VENTS VKF

W: 50-750  
dB(A): 50-75



### VENTS VKOM

W: 36-110  
dB(A): 32-54



VKOM 150	200 m³/h
VKOM 200	405 m³/h
VKOM 250	1070 m³/h
VKOM 315	1700 m³/h



## DIRECT EXHAUST AXIAL FANS

### VENTS OV1

W: 36-110  
dB(A): 32-54



OV1 150	200 m³/h
OV1 200	405 m³/h
OV1 250	1070 m³/h
OV1 315	1700 m³/h

### VENTS OVK1

W: 36-110  
dB(A): 32-54



OVK1 150	200 m³/h
OVK1 200	405 m³/h
OVK1 250	1070 m³/h
OVK1 315	1700 m³/h

### VENTS OV1...R

W: 36-68  
dB(A): 32-48



OV1 150 R	200 m³/h
OV1 200 R	405 m³/h
OV1 250 R	1070 m³/h

## CENTRIFUGAL FAN (SCROLL TYPE)

### VENTS VCU

W: 125-570  
dB(A): 60-70



VCU 2E 140x60	515 m³/h
VCU 2E 160x62	600 m³/h
VCU 2E 160x90	730 m³/h
VCU 4E 180x92	800 m³/h
VCU 4E 200x80	730 m³/h
VCU 4E 200x102	1350 m³/h
VCU 4E 225x102	1480 m³/h
VCU 4E 250x102	2000 m³/h
VCU 4E 250x140	2000 m³/h

### VENTS VCUN

W: 250-11000  
dB(A): 60-85



VCUN 355x143-4,0-4	8150 m³/h
VCUN 400x183-1,5-8	6545 m³/h
VCUN 400x183-2,2-6	8100 m³/h
VCUN 400x183-5,5-4	10175 m³/h
VCUN 450x203-3,0-8	10230 m³/h
VCUN 450x203-4,0-6	11150 m³/h
VCUN 450x203-11,0-4	19000 m³/h
VCUN 500x229-5,5-8	11550 m³/h
VCUN 500x229-7,5-6	14960 m³/h
VCUN 500x229-11,0-4	17250 m³/h

VCUN 140x74-0,25-4	450 m³/h
VCUN 140x74-0,37-2	710 m³/h
VCUN 160x74-0,55-4	750 m³/h
VCUN 160x74-0,75-2	1540 m³/h
VCUN 180x74-0,55-4	1030 m³/h
VCUN 180x74-1,1-2	1950 m³/h
VCUN 200x93-0,55-4	1615 m³/h
VCUN 200x93-1,1-2	1900 m³/h
VCUN 225x103-1,1-4	2125 m³/h
VCUN 225x103-2,2-2	3350 m³/h
VCUN 240x114-2,2-4	2930 m³/h
VCUN 240x114-3,0-2	4350 m³/h
VCUN 250x127-1,5-6	2415 m³/h
VCUN 250x127-2,2-4	3720 m³/h
VCUN 250x127-5,5-2	4820 m³/h
VCUN 280x127-1,5-6	3450 m³/h
VCUN 280x127-2,2-4	4395 m³/h
VCUN 280x127-5,5-2	6330 m³/h
VCUN 315x143-2,2-6	4375 m³/h

## ROOF FANS

### VENTS VKV (centrifugal)

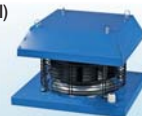
W: 85-640  
dB(A): 45-66



VKV / VKH 2E 220	700 m³/h
VKV / VKH 2E 225	900 m³/h
VKV / VKH 2E 250	1300 m³/h
VKV / VKH 2E 280	1780 m³/h
VKV / VKH 4E 310	1820 m³/h
VKV / VKH 4D 310	1950 m³/h
VKV / VKH 4E 355	2800 m³/h
VKV / VKH 4D 355	2350 m³/h
VKV / VKH 4E 400	3400 m³/h
VKV / VKH 4D 400	3800 m³/h
VKV / VKH 4E 450	3850 m³/h
VKV / VKH 4D 450	4300 m³/h
VKV / VKH 6E 500	4700 m³/h

### VENTS VKH (centrifugal)

W: 85-640  
dB(A): 45-66



### VENTS VKV EC (centrifugal)

kW: 0,485-2,7  
dB(A): 47-65



VKV / VKH 250 EC	1750 m³/h
VKV / VKH 280 EC	2650 m³/h
VKV / VKH 310 EC	3220 m³/h
VKV / VKH 355 EC	4500 m³/h
VKV / VKH 400 EC	5360 m³/h
VKV / VKH 450 EC	6700 m³/h
VKV / VKH 500 EC	10500 m³/h
VKV / VKH 560 EC	11400 m³/h

### VENTS VKH EC (centrifugal)

kW: 0,485-2,7  
dB(A): 47-65



VKV / VKH 250 EC	1750 m³/h
VKV / VKH 280 EC	2650 m³/h
VKV / VKH 310 EC	3220 m³/h
VKV / VKH 355 EC	4500 m³/h
VKV / VKH 400 EC	5360 m³/h
VKV / VKH 450 EC	6700 m³/h
VKV / VKH 500 EC	10500 m³/h
VKV / VKH 560 EC	11400 m³/h

### VENTS VKMK (centrifugal)

W: 98-296  
dB(A): 47-54



VKMK 150	555 m³/h
VKMK 200	950 m³/h
VKMK 250	1310 m³/h
VKMK 315	1880 m³/h

### VENTS VOK (axial)

W: 50-145  
dB(A): 50-62



VOK 2E 200	860 m³/h
VOK 2E 250	1050 m³/h
VOK 4E 250	800 m³/h
VOK 2E 300	2230 m³/h
VOK 4E 300	1340 m³/h
VOK 4E 350	2500 m³/h

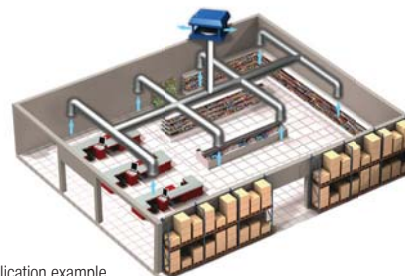
### VENTS VOK1 (axial)

W: 43-110  
dB(A): 32-54



VOK1 200	405 m³/h
VOK1 250	1070 m³/h
VOK1 315	1700 m³/h

Application example



## CEILING CENTRIFUGAL FANS

### VENTS VKP mini

W: 20-45  
dB(A): 32-44



VKP 80 mini	88 - 130 - 162 m³/h
VKP 100 mini	97 - 138 - 176 m³/h
VKP 100	240 m³/h
VKP 125	340 m³/h
VKP 150	553 m³/h
VKP 160	553 m³/h
VKP 125/100*2	340 m³/h
VKP 125/100*4	340 m³/h
VKP 150/125*2	553 m³/h

### VENTS VKP

W: 58-85  
dB(A): 47-50

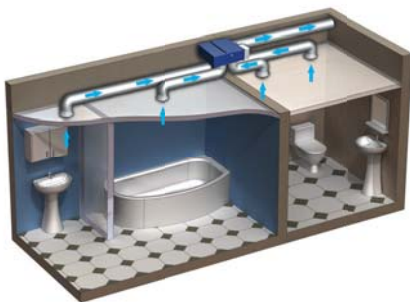


### VENTS VP

W: 56-61  
dB(A): 42-48



VP 100 K Q	190 m³/h
VP 100 K	240 m³/h
VP 125 K Q	225 m³/h
VP 125 K	310 m³/h



Application example



Application example

## CHIMNEY CENTRIFUGAL FANS

### VENTS KAM

W: 108-116  
dB(A): 42



KAM 125	400 m³/h
KAM 140	480 m³/h
KAM 150	520 m³/h
KAM 160	540 m³/h

### VENTS KAM Eco VENTS KAM Eco max

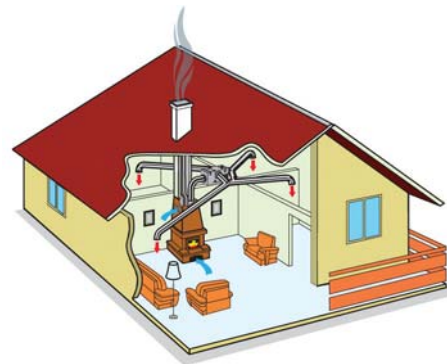
W: 32-127  
dB(A): 37-45

KAM 125 Eco	350 m³/h
KAM 140 Eco	420 m³/h
KAM 150 Eco	450 m³/h
KAM 150 Eco max	740 m³/h
KAM 160 Eco	470 m³/h

### VENTS KAM EcoDuo

W: 26-44  
dB(A): 29-39

KAM 125 EcoDuo	265-350 m³/h
KAM 140 EcoDuo	340-420 m³/h
KAM 150 EcoDuo	360-450 m³/h
KAM 160 EcoDuo	375-470 m³/h



Application example

## DESTRATIFICATORS

### VENTS DRF-OV (axial)

W: 50-140  
T<sub>max</sub> °C: 60



DRF-OV 250	800 m³/h
DRF-OV 300	1340 m³/h
DRF-OV 350	2500 m³/h

### VENTS DRFI-OV (axial sound-insulated)

W: 50-140  
T<sub>max</sub> °C: 60



DRFI-OV 250	800 m³/h
DRFI-OV 300	1340 m³/h
DRFI-OV 350	2500 m³/h

## AIR HANDLING UNITS

### VENTS VPA

kW: 1,8-9,3  
dB(A): 27-30



VPA 100	190 m³/h
VPA 125	285 m³/h
VPA 150	425 m³/h
VPA 200	810 m³/h
VPA 250	990 m³/h
VPA 315	1190-1520 m³/h

### VENTS MPA...E (electrical heater)

kW: 3,55-26,47  
dB(A): 35-53



MPA 800 E1	800 m³/h
MPA 1200 E3	1200 m³/h
MPA 1800 E3	2000 m³/h
MPA 2500 E3	2500 m³/h
MPA 3200 E3	3200 m³/h
MPA 3500 E3	3500 m³/h
MPA 800 W	750 m³/h
MPA 1200 W	1200 m³/h
MPA 1800 W	1870 m³/h
MPA 2500 W	2150 m³/h
MPA 3200 W	3000 m³/h
MPA 3500 W	3250 m³/h
MPA 5000 W	6500 m³/h

### VENTS MPA...W (water heater)

kW: 0,245-1,8  
dB(A): 35-55



### VENTS PA...E (electrical heater)

kW: 12,32-22,3  
dB(A): 51-58



PA 01 E	1275 m³/h
PA 01 W2	1200 m³/h
PA 01 W4	1200 m³/h
PA 02 E	2500 m³/h
PA 02 W2	2350 m³/h
PA 02 W4	2350 m³/h
PA 03 E	3350 m³/h
PA 03 W2	3260 m³/h
PA 03 W4	3260 m³/h
PA 04 W2	4100 m³/h
PA 04 W3	4100 m³/h

### VENTS PA...W (water heater)

kW: 0,32-4,3  
dB(A): 51-58



### VENTS VA

kW: 0,32-2,3  
dB(A): 51-58



VA 01	1400 m³/h
VA 02	2700 m³/h
VA 03	3450 m³/h
VA 04	4450 m³/h

## AIR HANDLING UNITS WITH HEAT RECOVERY

### VENTS VUT...H mini

W: 116-210  
dB(A): 24-47  
85%



VUT 200 H mini	200 m³/h
VUT 300 H mini	300 m³/h

### VENTS VUT...V mini

W: 116-210  
dB(A): 24-47  
85%



VUT 200 V mini	200 m³/h
VUT 300 V mini	300 m³/h

### VENTS VUT...H

W: 260-1300  
dB(A): 24-65  
88%



VUT 350 H	350 m³/h
VUT 500 H	500 m³/h
VUT 530 H	530 m³/h
VUT 600 H	600 m³/h
VUT 1000 H	1200 m³/h
VUT 2000 H	2200 m³/h

### VENTS VUT...H EC VENTS VUT...H EC Comfo

W: 140-334  
dB(A): 24-45  
98%



VUT 300-1 H EC	300 m³/h
VUT 300-1 H EC Comfo	300 m³/h
VUT 300-2 H EC	300 m³/h
VUT 300-2 H EC Comfo	300 m³/h
VUT 400 H EC	400 m³/h
VUT 400 H EC Comfo	400 m³/h
VUT 800 H EC	812 m³/h
VUT 800 H EC Comfo	812 m³/h

### VENTS VUT...EH (electrical heater)

kW: 3,3-19,3  
dB(A): 24-65  
88%



VUT 350 EH	350 m³/h
VUT 500 EH	500 m³/h
VUT 530 EH	530 m³/h
VUT 600 EH	600 m³/h
VUT 800 EH	800 m³/h
VUT 800 WH-2	780 m³/h
VUT 800 WH-4	780 m³/h
VUT 1000 EH	1200 m³/h
VUT 1000 WH-2	1100 m³/h
VUT 1000 WH-4	1100 m³/h
VUT 1500 EH	1750 m³/h
VUT 1500 WH-2	1700 m³/h
VUT 1500 WH-4	1700 m³/h
VUT 2000 EH	2200 m³/h
VUT 2000 WH-2	2100 m³/h
VUT 2000 WH-4	2100 m³/h

### VENTS VUT... WH (water heater)

W: 490-1300  
dB(A): 48-65  
78%



NEW 2014



## AIR HANDLING UNITS WITH HEAT RECOVERY

### VENTS VUT...EH EC (electrical heater)

kW: 3,14-4,35  
dB(A): 24-47  
90%



VUT 300-1 EH EC	300 m³/h
VUT 300-2 EH EC	300 m³/h
VUT 300-1 WH EC	300 m³/h
VUT 300-2 WH EC	300 m³/h
VUT 400 EH EC	400 m³/h
VUT 400 WH EC	400 m³/h
VUT 600 EH EC	600 m³/h
VUT 600 WH EC	550 m³/h

### VENTS VUT...WH EC (water heater)

W: 140-350  
dB(A): 24-47  
90%



### VENTS VUT R...EH EC (electrical heater)

kW: 2,0-9,0  
dB(A): 45-62  
85%



VUT R 400 EH EC	400 m³/h
VUT R 400 WH EC	400 m³/h
VUT R 700 EH EC	700 m³/h
VUT R 700 WH EC	700 m³/h
VUT R 900 EH EC	900 m³/h
VUT R 900 WH EC	900 m³/h
VUT R 1200 EH EC	1200 m³/h
VUT R 1200 WH EC	1200 m³/h
VUT R 1500 EH EC	1500 m³/h
VUT R 1500 WH EC	1500 m³/h

### VENTS VUT R...WH EC (water heater)

W: 290-750  
dB(A): 45-60  
85%

### VENTS VUT...H EC ECO VENTS VUT...EH EC ECO (electrical heater)

kW: 3,0  
dB(A): 24-27  
98%



VUT 300 H EC ECO	300 m³/h
VUT 400 H EC ECO	450 m³/h
VUT 900 H EC ECO	940 m³/h
VUT 300 EH EC ECO	300 m³/h
VUT 400 EH EC ECO	450 m³/h
VUT 900 EH EC ECO	940 m³/h

### VENTS VUT...PE EC (electrical heater)

kW: 1,6-23  
dB(A): 48-59  
90%



VUT 350 PE EC	400 m³/h
VUT 600 PE EC	700 m³/h
VUT 600 PW EC	600 m³/h
VUT 1000 PE EC	1100 m³/h
VUT 1000 PW EC	1000 m³/h
VUT 2000 PE EC	2000 m³/h
VUT 2000 PW EC	1950 m³/h
VUT 3000 PE EC	4000 m³/h
VUT 3000 PW EC	3800 m³/h

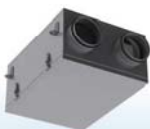
### VENTS VUT...PW EC (water heater)

W: 200-1990  
dB(A): 53-59  
90%



### VENTS VUE 100 P mini VENTS VUT 100 P mini

W: 30-56  
dB(A): 24-41  
VUE 100 P mini: 72%  
VUT 100 P mini: 76%

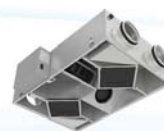


VUE 100 P mini	57-106 m³/h
VUT 100 P mini	

## AIR HANDLING UNITS WITH HEAT RECOVERY

### VENTS VUT2 200 P VENTS VUE2 200 P VENTS VUTE2 200 P

W: 67-142  
dB(A): 20-36  
89%



80-143-220 m³/h

### VENTS VUT2 250 P EC VENTS VUE2 250 P EC VENTS VUTE2 250 P EC

W: 125  
dB(A): 39  
89%



257 m³/h

### VENTS VUE2 150 P EC Comfo

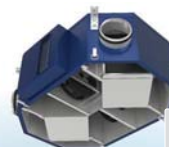
W: 57  
dB(A): 28  
87%



170 m³/h

### VENTS VUT2 250 PU EC VENTS VUE2 250 PU EC VENTS VUTE2 250 PU EC

W: 135  
dB(A): 38  
90%



275 m³/h

### VUT 300 E2V EC

kW: 4,22  
dB(A): 37  
95%



300 m³/h

### VENTS VUT 300 V mini EC Comfo

W: 167  
dB(A): 28-47  
78%



300 m³/h

### VENTS VUT 300 H mini EC Comfo

W: 167  
dB(A): 28-47  
78%



300 m³/h

## AIR HANDLING UNITS WITH HEAT RECOVERY

VENTS VUT 300 EV  
mini EC



40-270 m³/h

VENTS VUT 301 EV  
mini EC

kW: 1,69  
dB(A): 28-42  
95%

VENTS VUT 300 EVK  
mini EC



40-270 m³/h

VENTS VUT 301 EVK  
mini EC

kW: 1,69  
dB(A): 28-42  
95%

VENTS VUT 350 U EC  
VENTS VUT 350 EU EC



133-331 m³/h

kW: 0,22 / 2,22  
dB(A): 28-41  
82-98%

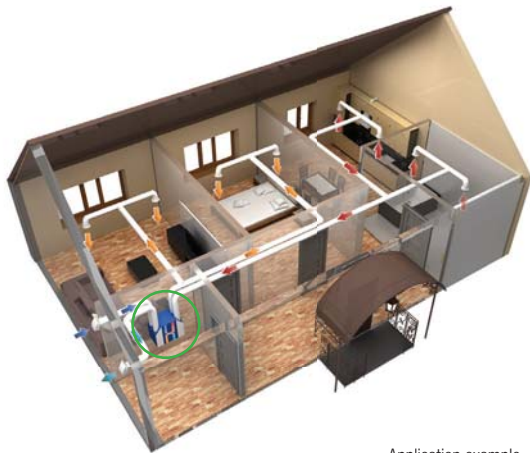
VENTS VUT 160 V EC  
VENTS VUT 350 VB EC  
VENTS VUT 550 VB EC



180-700 m³/h

kW: 51 - 333  
dB(S): 44-55  
98%

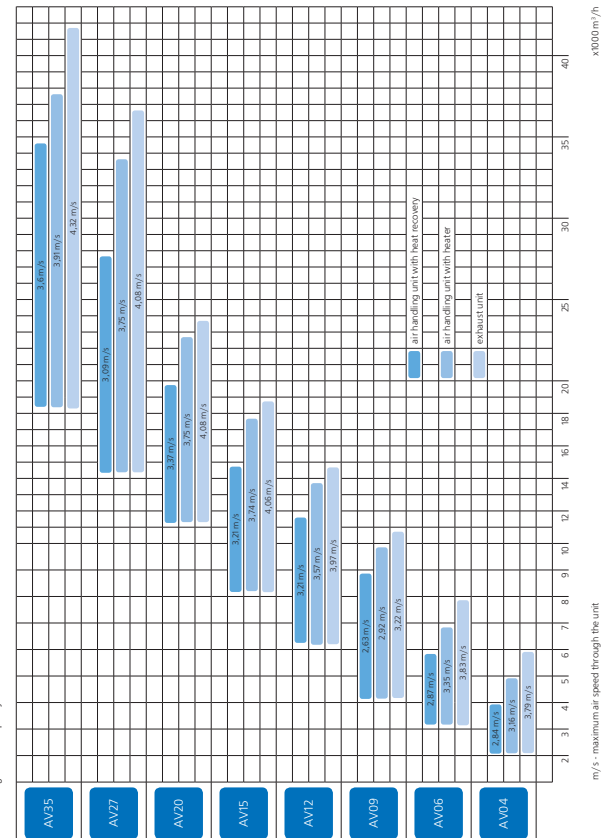
NEW 2015



Application example

## AIR HANDLING UNITS

airVENTS





## SINGLE ROOM HEAT RECOVERY VENTILATION

### VENTS Micra 60

W: 4,2-15,4  
dB(A): 22-29  
79%



30-60 m<sup>3</sup>/h

### VENTS Micra 150 E

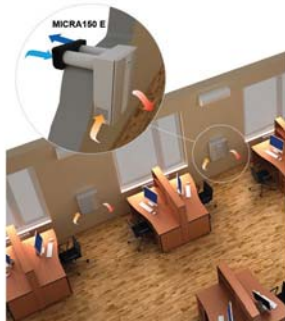
W: 9-40  
dB(A): 30-38  
82-92%



60-150 m<sup>3</sup>/h



Application example



Application example

## SINGLE-ROOM ENERGY SAVING VENTILATION



### TwinFresh Comfo series

#### VENTS TwinFresh Comfo RA1-25

W: 3,5-5,32  
dB(A): 22-33  
85%



TwinFresh Comfo RA1-25 7-24 m<sup>3</sup>/h

#### VENTS TwinFresh Comfo RA-35

W: 3,93-5,1  
dB(A): 18-28  
90%



TwinFresh Comfo RA-35 10-30 m<sup>3</sup>/h

#### VENTS TwinFresh Comfo RA-50

W: 3,8-5,61  
dB(A): 13-23  
90%



TwinFresh Comfo RA-50 14-54 m<sup>3</sup>/h

#### VENTS TwinFresh Comfo SA-35

W: 4,54-6,1  
dB(A): 19-29  
88%



TwinFresh Comfo SA-35 12-37 m<sup>3</sup>/h



### TwinFresh Solar series

#### TwinFresh Solar SA-60

W: 2,8-4,8  
dB(A): 24-29  
88%



TwinFresh Solar SA-60 35-58 m<sup>3</sup>/h

#### TwinFresh Solar SA-60 Pro

W: 2,8-4,8  
dB(A): 24-29  
88%



TwinFresh Solar SA-60 PRO 35-58 m<sup>3</sup>/h

## SINGLE-ROOM ENERGY SAVING VENTILATION



### TwinFresh Standard Series

#### VENTS TwinFresh S-60

W: 2,8-4,8  
dB(A): 24-29  
88%



TwinFresh S-60 35-58 m<sup>3</sup>/h

#### VENTS TwinFresh S1-50

W: 3,5-4,6  
dB(A): 14-24  
90%



TwinFresh S1-50 25-50 m<sup>3</sup>/h

#### VENTS TwinFresh R-50

W: 3,5-4,6  
dB(A): 14-24  
90%



TwinFresh R-50 25-50 m<sup>3</sup>/h



Application example

NEW 2014

NEW 2014

NEW 2014

## INTELLECTUAL FANS

VENTS iFan  
VENTS iFan Move

220122227  
222122227  
Ø21222212222



21 JBA SUPER SILENT  
0,8 W ENERGY EFFICIENT  
100/125 SMART



## LOW-NOISE AND ENERGY-SAVING FANS

VENTS Quiet



	1222	1222	1222	1222
22222	22222	22222	22222	2222222222
22222	2	2	222	222
2	222	12	12	19
222222	22	22	22	22
2 42	92	182	222	212

VENTS Silenta-M



	Ø2122	Ø 122	Ø 122
2	222	921	22
222222	22	21	22
2 42	22	122	222

VENTS Silenta-S



	Ø2122	Ø 122	Ø 122
2	222	922	22
222222	22	21	22
2 42	22	122	222

## INLINE FANS

VENTS VKO  
VENTS VKOK



	Ø2122	Ø 122	Ø 122
2	12	12	22
222222	22	22	22
2 42	122	182	222

VENTS VKO1  
VENTS VKO1k



	Ø2122	Ø 122	Ø 122
2	12	12	22
222222	22	22	22
2 42	122	192	222

## WALL- AND CEILING-MOUNTED FANS

VENTS M



	Ø2122	Ø 122	Ø 122
2	12	12	22
222222	22	22	22
2 42	98	182	222

VENTS M3



	Ø2122	Ø 122	Ø 122
2	12	12	22
222222	22	22	22
2 42	98	182	222

VENTS M1



	Ø2122	Ø 122	Ø 122
2	12	12	22
222222	22	22	22
2 42	98	182	222

VENTS MA  
VENTS MA reverse



	Ø2122	Ø 122	Ø 122
2	18	22	22
222222	22	22	22
2 42	98	182	222

MA reverse

	Ø2122
2	22122222
222222	11222222
2 42	222222

automatic shutters

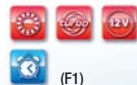
VENTS X1



	Ø2122	Ø 122	Ø 122
2	12	12	22
222222	22	22	22
2 42	99	182	222

slim

VENTS F  
VENTS F1



	Ø2122	Ø 122
2	12	12
222222	22	22
2 42	98	182

	Ø2122	Ø 122
2	12	12
222222	22	22
2 42	122	192

## WALL- AND CEILING-MOUNTED FANS

VENTS K  
VENTS K1



	Ø 100	Ø 125	Ø 150
W	14	16	24
dB(A)	34	35	38
m³/h	95	180	292

VENTS PF  
VENTS PF1



PF

	Ø 100	Ø 125	Ø 150
W	14	16	24
dB(A)	34	35	38
m³/h	98	185	292

PF1

	Ø 100	Ø 125	Ø 150
W	14	16	24
dB(A)	33	35	38
m³/h	100	190	299

VENTS S  
VENTS D



	Ø 100	Ø 125	Ø 150
W	14	16	24
dB(A)	34	35	38
m³/h	95	180	292

slim

## AXIAL DECORATIVE FANS

VENTS LD Fresh time



	Ø 100	Ø 125	Ø 150
W	14	16	24
dB(A)	33	34	37
m³/h	88	167	265

quartz clock

VENTS Modern



	Ø 100	Ø 125	Ø 150
W	14	16	24
dB(A)	33	34	37
m³/h	88	167	265

VENTS Modern Auto



	Ø 100	Ø 125	Ø 150
W	18	22	26
dB(A)	34	35	39
m³/h	98	185	295

automatic shutters

VENTS Domino



	Ø 100	Ø 125	Ø 150
W	14	16	24
dB(A)	33	34	37
m³/h	88	167	265

## AXIAL DECORATIVE FANS

VENTS LD



	Ø 100	Ø 125	Ø 150
W	14	16	24
dB(A)	33	34	37
m³/h	88	167	265

VENTS Z  
VENTS Z star



	Ø 100	Ø 125	Ø 150
W	14	16	24
dB(A)	37	38	40
m³/h	105	185	298

light

(VENTS Z star  
VENTS Vitro star)

VENTS LD Auto



	Ø 100	Ø 125	Ø 150
W	18	22	26
dB(A)	34	35	39
m³/h	98	185	295

automatic shutters

VENTS X  
VENTS X star



	Ø 100	Ø 125	Ø 150
W	14	16	24
dB(A)	33	34	37
m³/h	89	164	258

light

(VENTS Z star)



## WINDOW FANS

VENTS MAO1  
VENTS MAO2

VENTS MAO1  
reverse

VENTS M10K2



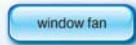
window fan

	Ø 125	Ø 150
W	22	26
dB(A)	35	41
m³/h	185	295

VENTS MAO1 reverse

	Ø 150
W	5,1-8,7
dB(A)	26-33
m³/h	110-202

VENTS W  
VENTS VWR



window fan

	Ø 180	Ø 230
W	25	30
dB(A)	31	32
m³/h	212	455

## CENTRIFUGAL FANS

VENTS CF  
VENTS CF3 (3-speed)



CF

	Ø 100
W	16
dB(A)	36
m³/h	98

CF3

	Ø 100
W	13-27
dB(A)	25-34
m³/h	48-98



Application example

## SUPPLY AND EXHAUST GRILLES

MV 100  
MV 120  
MV 160  
MV 170  
MV 250



154 x 154 mm  
187 x 187 mm  
221 x 229 mm  
250 x 250 mm

MV 125, MV 125-1  
MV 126, MV 126-1



182 x 251 mm  
204 x 204 mm

MV 110x140  
MV 140x140  
MV 140x210



134 x 164 mm  
164 x 164 mm  
160 x 230 mm

Single-element MV  
(from MV 150x150  
to MV 350x350)



150 x 150 mm	250 x 250 mm
175 x 175 mm	295 x 160 mm
205 x 205 mm	300 x 205 mm
215 x 175 mm	300 x 300 mm
250 x 180 mm	350 x 350 mm

MV 50 bV  
MV 51 bV  
MV 52 bV



Ø 47 mm  
Ø 40 mm

MV 80 bV  
MV 100 bV  
MV 125 bV  
MV 150 bV



Ø 80 mm  
Ø 100 mm  
Ø 125 mm  
Ø 150 mm

MV 102  
MV 122  
MV 152



154 x 154 mm  
186 x 186 mm

MV 100 J  
MV 120 J  
MV 160 J  
MV 170 J  
MV 250 J



154 x 154 mm  
186 x 186 mm  
221 x 299 mm  
250 x 250 mm

## SUPPLY AND EXHAUST GRILLES

MV 100 KV  
MV 120 KV  
MV 125 KV



182 x 252 mm

## SUPPLY AND EXHAUST DOOR GRILLES

MV 350  
MV 450



368 x 130 mm  
462 x 124 mm

MV 350/2  
MV 430/2  
MV 440/2  
MV 450/2



368 x 130 mm 205 x 205 mm  
462 x 124 mm 215 x 175 mm

MV 380/2



382 x 104 mm

## SUPPLY AND EXHAUST PLASTIC AIR DISK VALVES/DIFFUSERS

A...VR



Ø 80, 100, 125, 150, 200 mm

A...VRF



Ø 80, 100, 125, 150, 200 mm

MV...PF



Ø 80, 100, 125, 150, 200,  
Ø 250, 315 mm

FL 100



Ø 100 mm

light

## SUPPLY AND EXHAUST METAL GRILLES

MVM  
MVMP  
Single-row metal  
grilles



MVMP  
Multiple-row metal  
grilles



MVMP  
Slot metal  
grilles



MVMP  
Metal edge-raised  
grilles



MVMP  
Metal slot edge-raised  
grilles



MVMP...R  
Metal regulated  
grilles



MVMP...Rr  
MVMP...R  
Regulated slot metal  
grilles



MVM  
MVMP  
MVMA  
Metal door  
grilles



## HVAC GRILLES

**ORK  
DP**  
Sectional adjustable grilles



**ONG  
ONV  
ONK**  
Sectional single non-adjustable grilles



**DVK  
DVP**  
Swirl diffusers



## PROFIPLAST



**NGN**  
Supply and exhaust grilles



**GR**  
Exhaust grilles



**NK-4**  
Supply and exhaust grilles



## VENTILATORS

**PO 400**  
Window ventilator



**PS 102**  
Wall vent supplied with internal and external grilles and telescopic PVC round duct (length 350-500 mm).



**PSS 102**  
Energy saving WALL VENT WITH SOLAR PANEL. The wall vent is designed for continuous air exchange and supply of fresh air to premises. Solar panel provides more intensive air exchange as compared to regular passive airing.



## ACCESS DOORS

**D (D2)  
DZ**  
plastic



**DD**  
double-sided plastic



**DM  
DMZ  
DMR  
DMV**  
metal



**DKP  
DKM  
DG**  
concealed mounted





## ACCESSORIES

### Round and flat PVC ducting



Ø 100 mm	55 x 110 mm
Ø 125 mm	60 x 120 mm
Ø 150 mm	60 x 204 mm
Ø 200 mm	90 x 220 mm

### Flexible ducts for HVAC



Ø 80 mm	
Ø 100 mm	
Ø 125 mm	55 x 110 mm
Ø 150 mm	60 x 204 mm
Ø 200 mm	
Ø 250 mm	
Ø 315 mm	

### Accessories



Ø 100 mm	Ø 160 mm
Ø 120 mm	Ø 180 mm
Ø 125 mm	Ø 200 mm
Ø 130 mm	Ø 250 mm
Ø 140 mm	Ø 315 mm
Ø 150 mm	

### Electrical accessories



- Control unit
- Rotation speed control
- Speed switch
- Electronic temperature control
- Transformer
- Auto transformer speed control



Information in the leaflet is for reference only. VENTS reserves the right to modify any of its products' features, designs, components and specifications at any time and without notice to maintain the development and quality of manufactured goods.

[www.ventilation-system.com](http://www.ventilation-system.com)

01/2014